

Asian giant hornet: Detecting & Responding to Falsified Submissions

Jessica La Belle

Entomology Branch Administrative Assistant
Washington State Department of Agriculture

JLaBelle@agr.wa.gov

Hotline: 800-443-6684

Cell: 360-890-0378



Washington
State Department of
Agriculture

Murder Hornet Madness: the social phenomenon surrounding AGH

- ▶ May 2, 2020 NYT article
- ▶ Intense public interest
- ▶ Distraction from pandemic



Washington
State Department of
Agriculture



Receiving falsified submissions from the public

- ▶ Rare but does happen
- ▶ Sometimes accidental; “this looks like what I saw”
- ▶ Sometimes purposeful, motives unknown.
- ▶ WSDA has received enough of these submissions that any AGH photos from the public are quickly screened through a reverse image search.



Washington
State Department of
Agriculture

Falsified submissions: what to look for

- ▶ Photo of an Asian giant hornet
- ▶ Clear, high-quality photograph
- ▶ Poor quality digital image, like it has been copied or downloaded at a low resolution
- ▶ “Sensational”
- ▶ Vaguely familiar
- ▶ Pinned specimen



Washington
State Department of
Agriculture

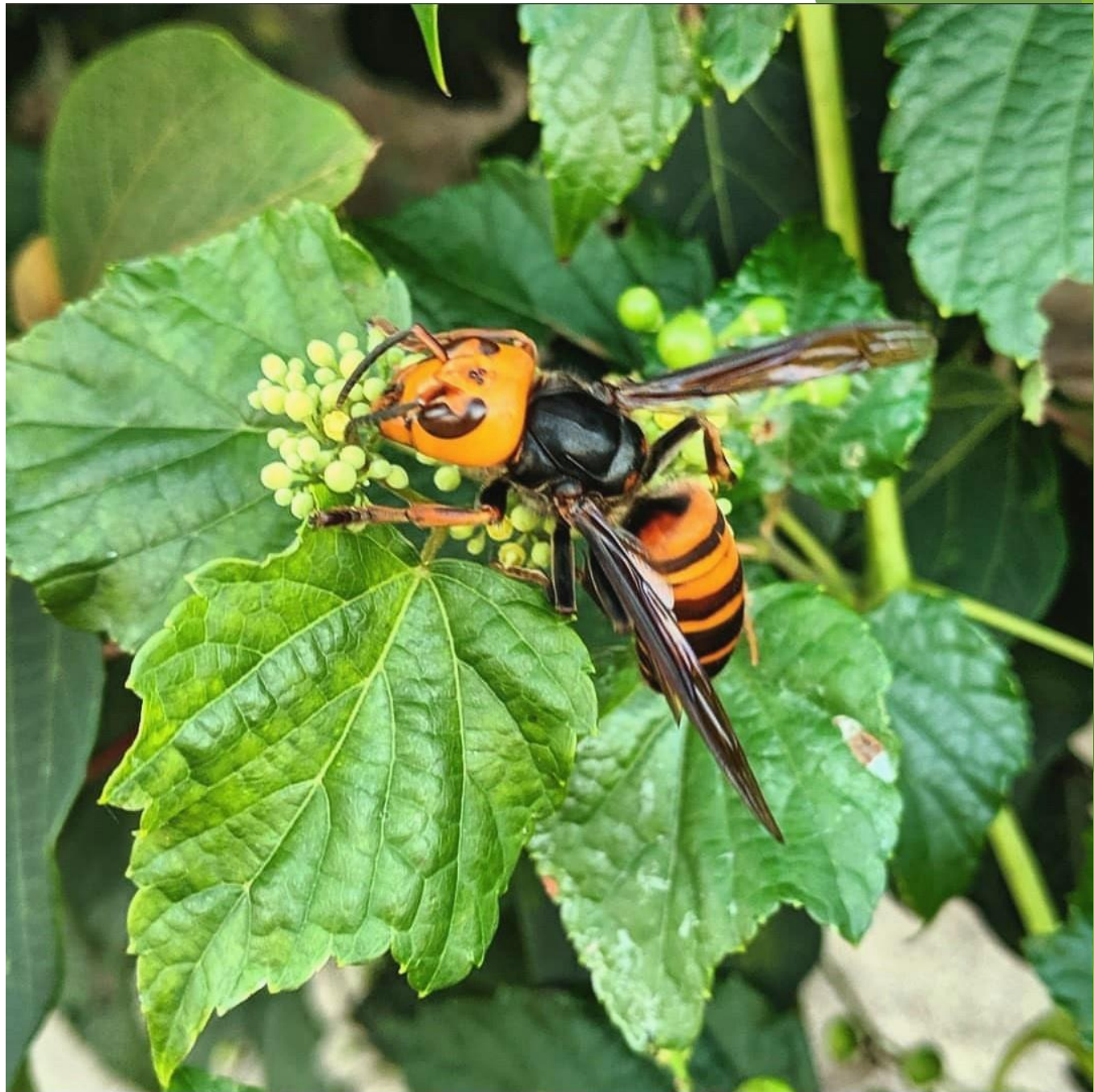


What's wrong with
this picture?

Close up

High quality

Artistic



Washington
State Department of
Agriculture

What's wrong with this picture?

Sensational

Live hornet

Familiar



Washington
State Department of
Agriculture

How to use a reverse image search engine

- ▶ A reverse image search only takes a few minutes and can save you or your agency significant work time and/or embarrassment.
- ▶ 1. On your computer, open your web browser
- ▶ 2. Go to Google Images: <https://images.google.com>
- ▶ 3. Click “Search by image” (click the camera icon)
- ▶ 4. Click Upload an image > Choose file or Browse
- ▶ 5. Select the image from your computer
- ▶ 6. Review the results. You may find your image itself or a link to the website where the image is being used.



Washington
State Department of
Agriculture

How to respond to falsified submissions

- ▶ There's no great way to confront a falsification
- ▶ Detached professionalism: you are the image of an agency
- ▶ Remember that we rely on public reports for detection
- ▶ Do not escalate



Washington
State Department of
Agriculture

